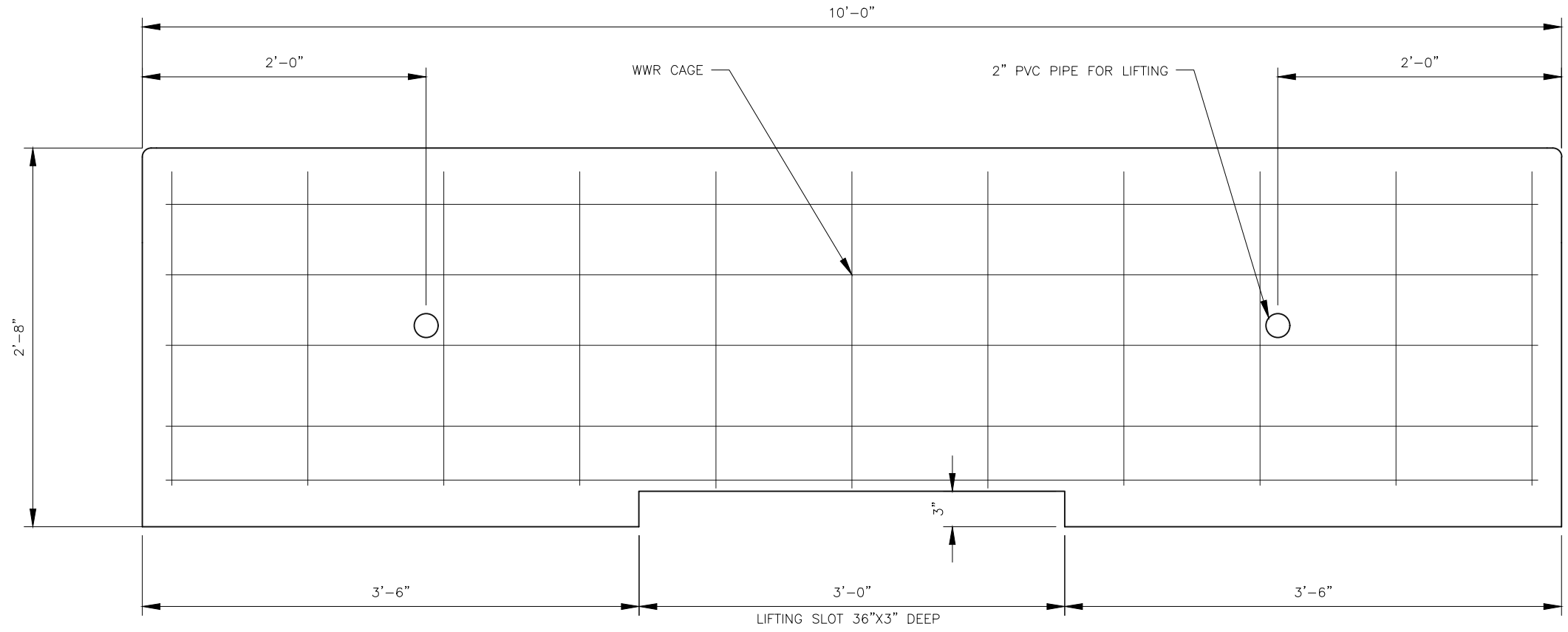
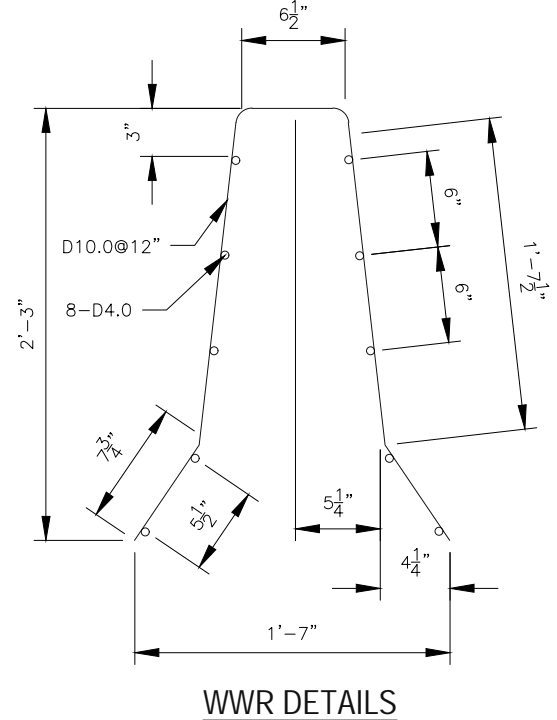


CROSS SECTION



ELEVATION



WWR DETAILS

WELDED WIRE REINFORCEMENT (WWR)

GENERAL NOTES.

1. DEFORMED WELDED WIRE REINFORCEMENT (WWR) SHALL CONFORM TO ASTM A497.
2. ALL REINFORCEMENT SHALL COMPLY WITH ITEM 440, "REINFORCING STEEL."

GENERAL NOTES

1. CONCRETE SHALL BE CLASS H, WITH A MINIMUM COMPRESSIVE STRENGTH OF 3,600 PSI.

APPROXIMATE QUANTITIES - 10' BARRIER	
	PRECAST
CONCRETE CY.	1.16
WWR LB.	30.5
WEIGHT	4650 LBS, 2.3 TONS
FREIGHT	100 LF, 10 PCS/TRUCK

PREPARED FOR:



SUMMIT PRECAST CONCRETE, LP
 15349 SUMMIT PARK DR.
 SUITE 101
 MONTGOMERY, TX 77356
 www.summitprecastconcrete.com
 936-701-1977

REV. NO.	DATE	REVISION

PREPARED BY:

860 HOOPER ROAD, ENDWELL, NY 13760-1564
 PHONE (607) 231-6600 FAX (607) 231-6650

DATE: 07/05/24	SHEET TITLE: PLAN AND ELEVATIONS	DRWN BY: ADVS
SCALE: N.T.S.		CRD BY: DV
PROJECT: CONCRETE SAFETY BARRIER 10'-CSB-F-SHAPE-NO CONNECTION		
SUMMIT PROJECT NO.:	DWG. I.D.	
DELTA PROJ. NO.: 2024.751.003	SHT. NO. 1 OF 1	